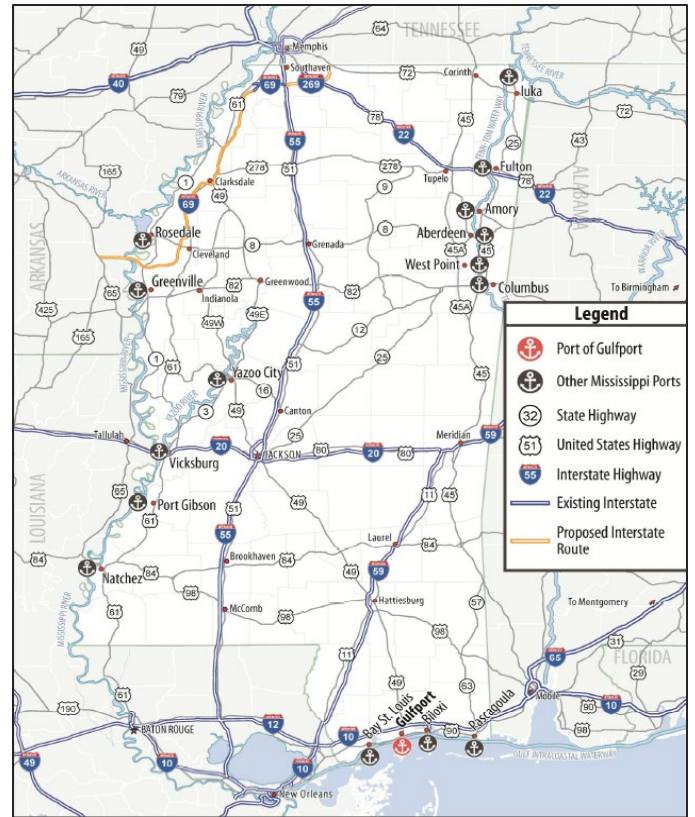
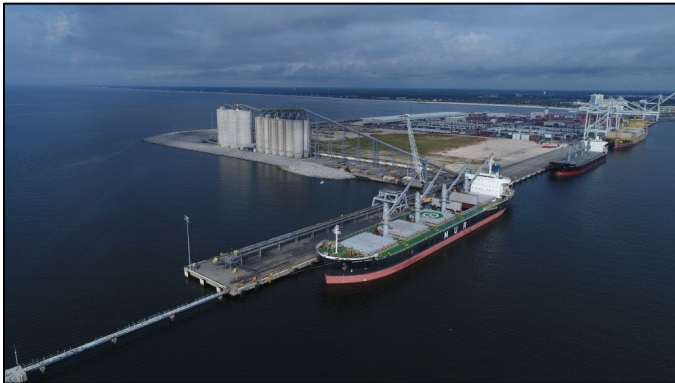


Port of Gulfport

Diversified deepwater port on the Northern Gulf of America with congestion free access to the mid-west U.S. via road and rail.

Ships and receives containerized, bulk, break-bulk, RO-RO and special project cargo. Hosts Blue Economy manufacturing and research vessels.



Location

City: Gulfport, MS
County: Harrison
Water: Northern Gulf of America

Connectivity

Road: Congestion free access to U.S. 90; 5 miles to I-10.
Rail: On dock class one rail with intermodal capacity.

Facilities

6,600 linear feet of berthing space, including RO-RO capabilities; 600,000 sq. ft. of warehouse space; 300 acres with several inland properties; Three 100-ton ship-to-shore gantry cranes (4th arriving August, 2025); 1,400 reefer plugs on terminal.

Typical Cargoes

Fresh fruit, proteins, paper, cotton, ilmenite ore, lumber, heavy wheeled and tracked equipment including military, freight of all kinds.

Services

Two licensed stevedores; Refrigerated and large container storage shipment; Break-bulk shipments; Foreign trade zone; Warehousing for bulk, break-bulk, and containerized cargo; Stuffing; Stripping; Consolidation and deconsolidating needs; Rail services.

Available Land

Permit for 196-acre expansion south of current footprint; Transloading site 3 miles from port; Properties adjacent to U.S. 90 north of the port.

Learn More About Us

shipmspa.com

Contact Us

Port Director: Jon Nass
Phone: 228-865-4300
Address: 2510 14th Street, Suite 1450
Gulfport, MS 39501

Business

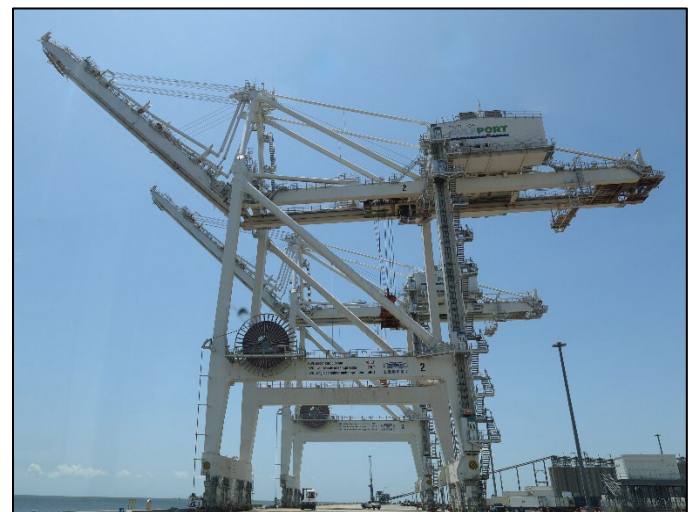
Andrew Haines

Inquiries

Connected Oceans

Contact:

andrew@connected-oceans.com



2025